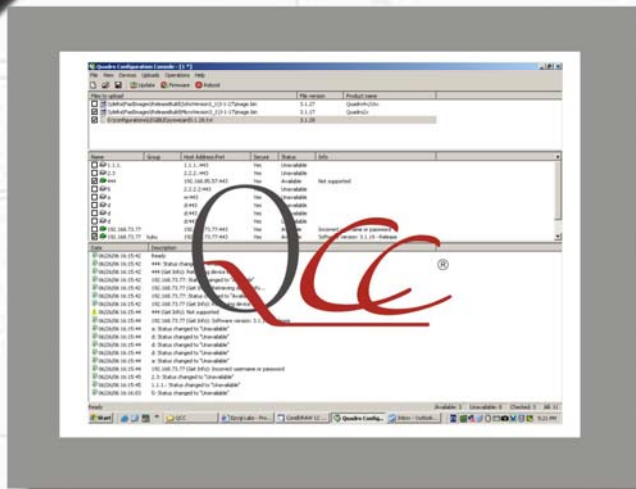




Quadro Configuration Console



Update

Backup

Restore

Reboot



Manual: User's Guide

Table of Contents

About This User's Guide	3
Introducing the Quadro Configuration Console.....	4
Technical Specification	6
Requirements	6
System Requirements	6
Quadro Software Requirements	6
Installation.....	6
QCC's Graphical Interface.....	7
The Files Pane	8
To Add a File.....	8
To View/Edit a File	9
To Remove a File	9
To Check/Uncheck All.....	9
The Quadros Pane	10
To Add a Quadro	10
To Edit the Settings of a Quadro	11
To Delete a Quadro	11
To Manage a Quadro	12
To Check/Uncheck a Group	12
To Check/Uncheck All.....	12
The Log Pane.....	13
Copy.....	13
Select All.....	14
Clear	14
Operations	15
To Upload Legible Configuration Files	15
To Update the Firmware	16
To Reboot a Quadro.....	16
To Restore the Configuration.....	17
To Back Up the Configuration	18
To Upload a Language Pack	19
To Upload Company Details	20
To Upload Custom Scenario and Voice Messages.....	21
Saving the QCC's Configuration.....	21

Options	22
Technical Terms.....	24

About This User's Guide

This guide gives step-by-step instructions on the setup and operation of the QCC. The guide is divided into the following chapters:

[Introducing the Quadro Configuration Console](#) gives a basic idea of the QCC and lists the operations it can execute.

[Technical Specification](#) gives some technical details on the QCC design.

[Requirements](#) will outline the system and Quadro software requirements.

[Installation](#) explains how to install the QCC.

[QCC's Graphical Interface](#) explains the graphical user interface of the QCC and the operations that can be executed directly from its panes.

[Operations](#) will explain how to use the QCC.

[Saving the QCC's Configuration](#) lists the settings that can be saved in a ".qcc" file.

[Options](#) will describe the configurable connection settings.

[Technical Terms](#) will explain technical terminology used in this document.

Introducing the Quadro Configuration Console

The Quadro Configuration Console (QCC) is a tool that allows the administrator to centrally manage a network of Quadro units.

The following QCC functions allow easy and convenient administration of the Quadro network:

Manage Quadro units from a single desktop PC

- **Automatic Login to Quadro Web Management**
Allows the administrator to automatically log into the Quadro WEB server
- **Reboot**
Allows the administrator to remotely initiate a system reboot
- **Configuration Backup**
Allows the configuration of Quadro units to be backed up and downloaded to the administrator's PC.
- **Configuration Restore**
Allows a backup configuration file to be uploaded to and restored on Quadro units
- **Firmware Update**
Allows a selected firmware file to be uploaded to and installed on Quadro units
- **Legible Configuration File Upload**
Allows selected legible configuration files to be sequentially uploaded to Quadro units
- **Language Pack Upload**
Allows a selected language pack to be uploaded to Quadro units
- **Upload Company Details**
Allows company details, such as the static and dynamic logos, to be uploaded to Quadro units
- **Upload Custom Scenario and Voice Messages**
Allows attendant custom scenario and WAV files compressed to a "tar.gz" file to be uploaded to Quadro units

View the statuses of all Quadro units on the network in a single window

The QCC displays the connection state with a managed Quadro: *Available* – the QCC is successfully connected to the Quadro and *Unavailable* – the QCC fails to connect to the Quadro. The administrator can easily notice a change in the connection state and take steps to fix the problem if the connection is down.

Group identical Quadro models together and handle the group as single a unit

The administrator can combine similar Quadro models into a group and handle the group as a single unit. This option provides the possibility of executing actions directly over a group, instead of repeating it separately for each Quadro.

Receive notifications of Quadro status changes and operation results to a single place

The QCC displays the operation results and changes to the system in a separate pane called the **Log** pane. The notifications are labeled with an icon to display the severity of an event occurred. With this regard, three types of notifications can be received to the QCC: informative, warning and error.

Receive notifications of Quadro status changes by E-mail

The QCC has feature to send notification e-mail to preconfigured user's e-mail address when Quadro changes its status from available to unavailable or vice versa.

Technical Specification

The QCC is designed as a Windows SDI (Single Document Interface) application, which can be run on desktop PCs. Only one instance (copy) of the QCC can be run at a time. Trying to start a second copy will restore the instance that is already running.

The QCC uses HTTP/HTTPS protocols to communicate with Quadros and the legible configuration mechanism to change system configuration settings.

Requirements

System Requirements

The following system specifications are required for the operation of the QCC:

- Microsoft Windows 2000, or higher.
- Network connection.

Quadro Software Requirements

The QCC is compatible with the following Quadro devices beginning with the software version listed:

- Quadro2x: SW-5.0.11
- Quadro4x/16x: SW-5.0.11
- QuadroM32x: SW-5.0.8
- QuadroM-E1/T1: SW-5.0.5
- QuadroFXO: SW-5.0.11
- QuadroISDN: SW-5.0.11
- Quadro6L: SW-5.0.10
- Quadro4Li: SW-5.0.7
- QuadroM8L/26x/12Li/26xi: SW-5.2.7

Installation

To install the QCC, run the executable file “setup.exe” and follow the instructions of the Setup wizard.

To launch the QCC, run its executable file “QCC.exe” that is by default installed in the C:\Program Files\Epygi Technologies\QCC directory, or double-click on its icon on the desktop, or click on its quick launch icon.

QCC's Graphical Interface

The working space of the QCC is split into three panes that are separated by division bars (see Figure 1). By dragging these bars, you can define how much of the total space to allocate to each pane.

- The **Files** pane - displays the paths of firmware and legible configuration files to be uploaded.
- The **Quadros** pane – displays the list of Quadro units to be managed.
- The **Log** pane – displays the information on operation results, Quadro state changes, etc.

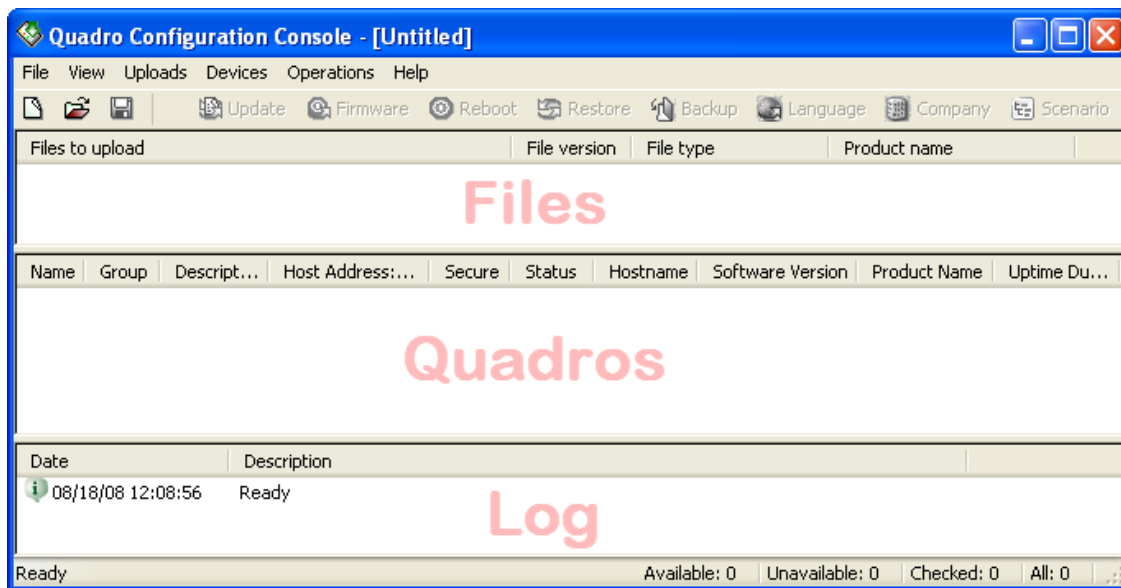


Figure 1 The graphical user interface of the QCC

The Files Pane

The **Files** pane displays the location of legible configuration and firmware files to be uploaded. The following operations that can be executed either from the right-click menu within this pane or from the **Uploads** menu. The instructions on executing these operations are described below.

- **Add** opens a file chooser to allow selecting the files to be uploaded. The path of a selected file is then displayed in the **Files** pane.
- **View/Edit** opens a selected legible configuration file with a text editor.
- **Remove** removes a selected file path from the **Files** pane.
- **Check/Uncheck All** selects all files in the **Files** pane.

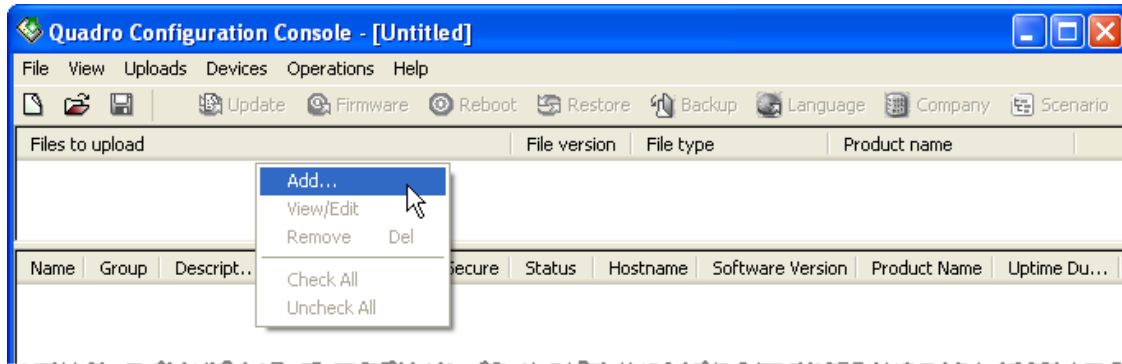


Figure 2 The right-click menu of the Files pane

To Add a File

Right-click anywhere within the **Files** pane and choose **Add** to browse for a required file (see Figure 2).

Select the file and click the **Open** button. The path of the corresponding file will be added to the **Files** pane (see Figure 3).

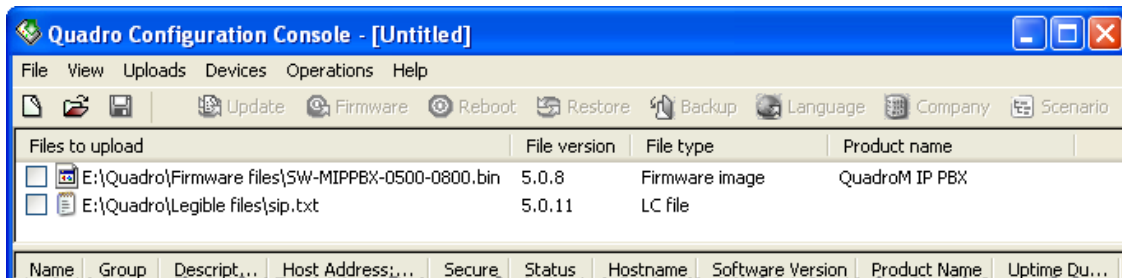


Figure 3 The path of the specified file listed in the Files pane

Please note: When adding a legible configuration or firmware file, the QCC checks its validity. For legible configuration files, the validity checking is based on verifying the presence of the configuration version number in the first line of a file. The file must also be an ASCII text file.

For firmware files, the validity checking criterion constitutes the file format that must match the format used for Quadro firmware files. If a selected file does not meet the respective criterion, the QCC will prevent adding the file and display an error message.

Each file in the **Files** pane is displayed with the following information:

- **Files to upload** - indicates the file path,
- **File version** - indicates the software version that the file represents,
- **File type** – indicates whether the path points to a legible configuration (*LCC file*) or firmware file (*Firmware image*),
- **Product name** - indicates the Quadro models for which the firmware file is valid (displayed for firmware files only).

To View/Edit a File

Please note: Viewing or editing is possible only for legible configuration files.

In the **Files** pane, double-click on the entry to be viewed or right-click on the entry and choose **View/Edit**. This opens the file with the system's default text editor (Notepad, Word Pad, etc.).

To Remove a File

In the **Files** pane, right-click on the entry to be removed and choose **Remove** or press the **Del** keyboard button.

Click the **OK** button when asked for confirmation. Note that this does not delete the file from its location, but only removes its path from the **Files** pane.

To Check/Uncheck All

Right-click anywhere in the **Files** pane and choose **Check/Uncheck All** to select all files in the **Files** pane. Selecting all files is useful if a number of legible configuration files are to be sequentially uploaded (see

[To Upload Legible Configuration Files](#)).

The Quadros Pane

The **Quadros** pane displays the list of the Quadro units to be managed. The pane allows for the following operations that can be executed either from the right-click menu within this pane or from the **Quadros** menu. The instructions on executing these operations are described below.

- **Add** opens a dialog box where Quadro connection settings can be specified.
- **Edit** opens a dialog box to allow the connection settings of a selected Quadro to be modified.
- **Delete** removes selected Quadro units from the **Quadros** pane.
- **Manage** opens a browser and logs into the Quadro WEB server with the administrator's privileges.
- **Check/Uncheck Group** select/unselects all Quadros within the same group as the highlighted Quadro.
- **Check/Uncheck All** select/unselects all Quadros in the **Quadros** pane.

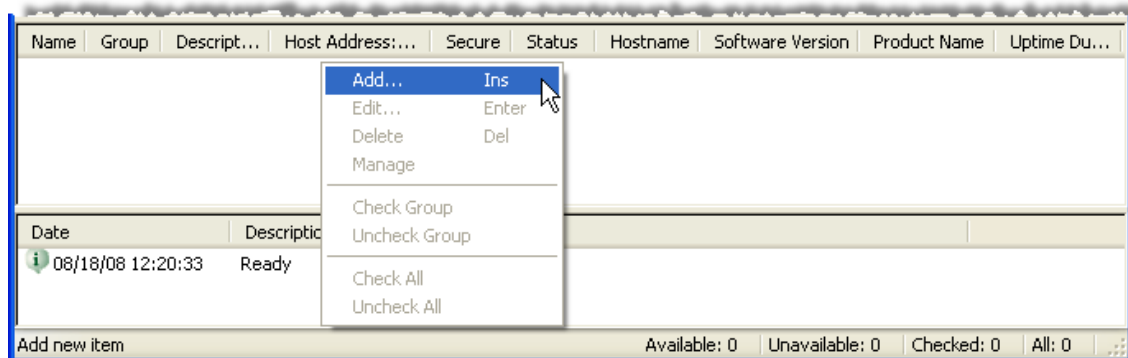


Figure 4 The right-click menu of the Devices pane

To Add a Quadro

Right-click anywhere within the **Quadros** pane and choose **Add** or press the **Ins** keyboard button (see Figure 4). In the **Add** dialog box, specify the following settings:

- **Name** – any text to identify the Quadro. For example, a host name-related name.
Please note: A name must be unique within the existing names.
- **Group** (optional) - The QCC allows forming groups of identical Quadro models and operating with each group as with a single unit. For example, you may group all QuadroM32x's on the network into one group named QM32x's and execute the operations, such as the firmware or configuration update, over that group. Note that it will still be possible to refer to a single device in the group.

To add a Quadro to an existing group, select the group name from the **Group** combo box; otherwise, enter a name for the new group in the **Group** text field. Next time you add a Quadro the specified name will be available in the **Group** combo box.

- **Description** - some descriptive information about the Quadro.
- **Host Address** - the IP address or FQDN of the Quadro.
- **Port** - the web-server-port of the Quadro. By default, this is set to 80. Changing this default value is not usually required with the exception of the following two cases:
 1. The Quadro's administrator has changed the default web server port of the Quadro (this is done from a hidden cgi page). In this case, the **Port** set in the QCC should match the value set on the Quadro.

Figure 5 Add a device dialog box

2. The QCC accesses the Quadro over a NAT that has a port translation rule enabled to reach the Quadro's web management. The following description is an example of such a rule: "forward all incoming HTTP traffic addressed to port 8080 to port 80 of a specified Quadro." In this case, the **Port** set in the QCC should match the forwarded port (8080) on the NAT.
- **Use secure connection** - indicates whether the HTTP or HTTPS (HTTP Secure) should be used to connect to the Quadro. To set up a secure connection with the Quadro, select this checkbox and specify the appropriate port in the **Secure port** text box (by default 443). For an HTTP connection, leave the checkbox clear.
 - **Username** and **Password** - the username and password required for the administrator login to the device (by default, *admin* and *19* respectively).
 - **Send e-mail** – Indicates whether to send notification e-mail about the status change of Quadro or not. E-mail recipient and sender are set in **Options** dialog box (Operations→Options).





Name	Group	Descript...	Host Address:...	Secure	Status	Hostname	Software Version	Product Name	Uptime Du...
<input type="checkbox"/>  Q4x		TechSup...	192.168.75.23...	Yes	Avail...	TQuadr...	5.0.11 - Release	Quadro4x	3 hour 24 ...

Figure 6 The Quadro added in the Quadros pane

After all the settings have been specified, click **OK**. The corresponding entry will be added to the **Quadros** pane (see Figure 6). With the exception of the **Username** and **Password**, which are not displayed for the security purposes, each Quadro in the pane is displayed with the settings specified when adding it. The pane will additionally display the following information:

- **Quadro Hostname**,
- **Product Name** – the Quadro model,
- **Uptime Duration** – the period the Quadro is on since the last reboot.

The icon next to the **Quadro name** and the **Status** column display the connection state with that Quadro (see the table below). If the connection with the Quadro is successful (the status column shows *Available*), then the **Software Version** column will display the software version the Quadro is running.

Icon	Status	Comments
	Unknown	The QCC is trying to connect to the Quadro.
	Available	The connection with the Quadro has been established. The Quadro is available for further operations.
	Unavailable	The connection with the Quadro could not be established: the Quadro may be down or behind a NAT. This may also be the result of entering the wrong values for connection or login parameters.

To Edit the Settings of a Quadro

In the **Quadros** pane, double-click on the appropriate entry or right-click on it and choose **Edit**. You may also edit the settings of a Quadro by clicking on the corresponding entry and pressing the **Enter** keyboard button. This opens the **Edit** dialog box with the specified settings.

Change any settings you find necessary and click **OK**.

To Delete a Quadro

Right-click on the entry to be removed and choose **Delete**.

The QCC will display a prompt notifying that the backup folders created for selected Quadros will also be removed. Click **Yes** to proceed with deleting. To relocate the folders prior to deleting the Quadros, click **No**.

You may also delete a Quadro by clicking on the corresponding entry in the **Quadros** pane and pressing the **Del** keyboard button.

To Manage a Quadro

Right-click on any device in the **Quadros** pane and select **Manage**. This connects to the Quadro's web management and logs automatically into it. The connection is established using the system's default web browser. Depending on the browser's settings, the web management page of a Quadro will be displayed either in a new window or in an already open browser's window.

The operation can also be launched by holding down the **Ctrl** key and double clicking on the appropriate entry.

To Check/Uncheck a Group

Click on the appropriate entry within the group and choose **Check Group**. This is useful if further operations must be executed over a group. For the operations available for a group, see the chapter [Operations](#) below.




To cancel the selection, click on the appropriate entry within the group and choose **Uncheck Group**.

To Check/Uncheck All

Right-click anywhere in the **Quadros** pane and choose **Check/Uncheck All**.

The Log Pane

The **Log** pane is for informative purposes only. It gives information on the application's activities, changes in the state of the devices and operation results (referred as events). Each entry in the pane starts with an icon (see the table below) that shows the severity of an event and the date and time when it occurred:

Icon	Event type	Comments	Examples
	Informative	Notifies of changes in the Quadro state, events, the progress of initiated operations, etc.	<i>Status changed to available</i>
	Warning	Notifies that a Quadro is running with the software incompatible with the QCC.	<i>Not supported</i>
	Error	Notifies of operation failures, errors occurred while trying to connect to a Quadro, etc.	<i>Upload failed</i>

If an event relates to a specific Quadro, the **Description** column of the corresponding log entry will start with the name of that Quadro (see Figure 7). The log entries that display the information on an operation result will additionally contain the operation name.

Please note: The listed events are only QCC specific. They indicate the progress of operations initiated by the QCC.

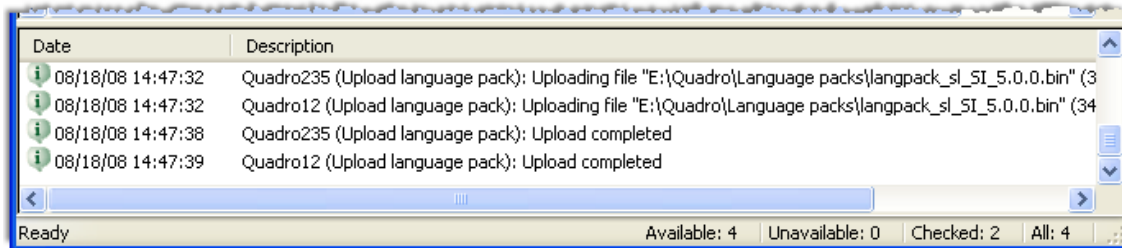


Figure 7 Logs pane

The **Log** pane allows for the following operations that can be initiated from the right-click menu within this pane (see Figure 8). The instructions on executing these operations are described below.

- **Copy** copies selected log entries into the system clipboard.
- **Select All** selects all log entries available in the **Log** pane.
- **Clear** removes all log entries from the **Log** pane.

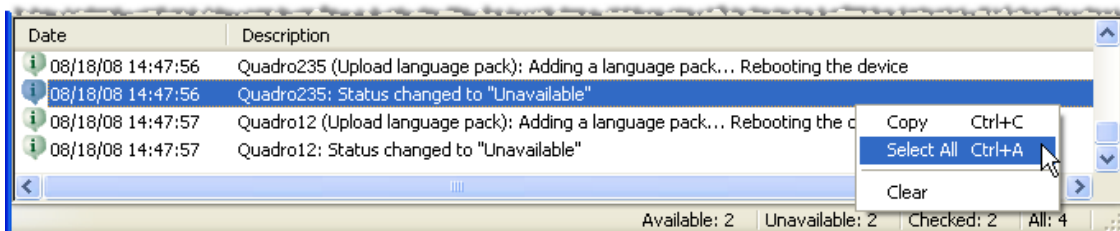


Figure 8 The right-click menu of the Logs pane

Copy

1. Select the logs to be copied. Log entries can be selected either by holding down the Ctrl or Shift button and clicking the entries or by clicking somewhere in the pane and moving the mouse over the entries (Figure 9).
2. Right-click on the selection and choose **Copy**.
3. The selected log entries will be copied into the system clipboard.

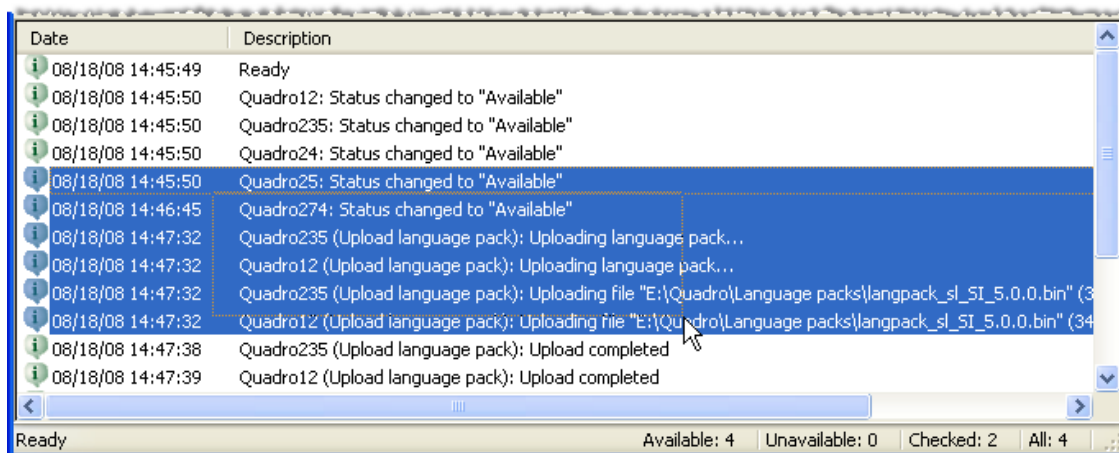


Figure 9 Selecting several log entries

Select All

Right-click anywhere in the **Log** pane and click **Select All** to select all log entries in the pane.

Clear

Right-click anywhere in the **Log** pane and click **Clear** to remove all log entries from the pane.

Operations

The QCC allows for the following operations:

- [Legible configuration file upload](#) - allows selected legible configuration files to be uploaded to Quadro units.
- [Firmware update](#) - allows a selected firmware file to be uploaded to and installed on Quadro units.
- [Reboot](#) - allows the administrator to initiate a system reboot.
- [Configuration restore](#) - allows a backup configuration file to be uploaded to and restored on Quadro units.
- [Configuration backup](#) - allows the configuration of selected Quadro units to be backed up and downloaded to the administrator's PC.
- [Language pack upload](#) - allows a language pack file to be uploaded to selected Quadro units.
- [Upload Company Details](#) - allows static and dynamic logos and other related information to be uploaded to Quadro units.
- [Upload custom scenario and voice messages](#) - allows attendant custom scenario and WAV files compressed to a "tar.gz" file to be uploaded to Quadro units.

Please note: The operations listed above will work only for the devices with an *Available* status (see [Add a Quadro](#)).

To Upload Legible Configuration Files

1. In the **Quadros** pane, select the Quadro units whose configuration is to be modified.
2. In the **Files** pane, select the legible configuration file(s) to upload. If multiple files have been selected, the QCC will upload those files sequentially in the order they are listed in the pane (see Figure 10).
3. Click on the **Update** toolbar icon or choose **Update** from the **Operations** menu. Note that uploading legible configuration files does not cause a Quadro to reboot.

The upload of several legible configuration files to several Quadro units takes place in the following order:

1. The QCC uploads a file that is first on the **Files** list to all selected Quadros simultaneously.
Each Quadro that receives the file parses it to verify the validity. If the uploaded legible configuration file is valid, the Quadro will apply the settings specified in the LCF. Otherwise, it will send the description of an error occurred to the QCC that will print it into the **Log** pane. Note that this will not stop an overall upload procedure.
2. After the QCC receives a notification of the legible configuration update result from any Quadro (successful or failed), it sends out the next file on the list to that Quadro.

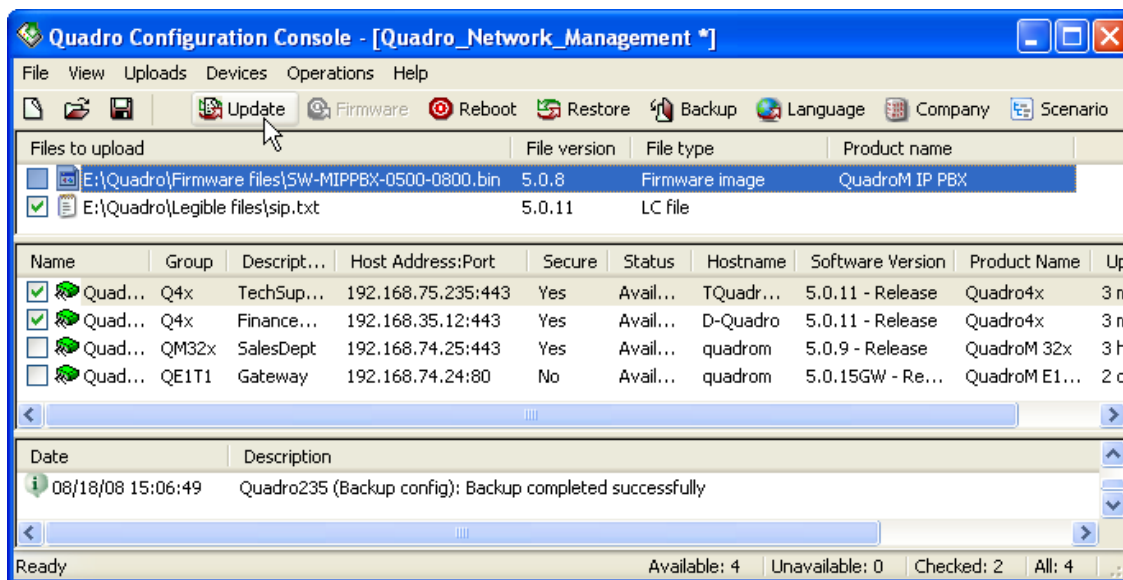


Figure 10 Uploading legible configuration files

To Update the Firmware

1. In the **Quadros** pane, select the Quadro units whose firmware is to be updated.
2. In the **Files** pane, select the firmware file (see Figure 11). Note that only one firmware file can be uploaded per operation. Trying to simultaneously upload several firmware files will display a warning about an illegal operation.
3. Click on the **Firmware** toolbar icon or choose **Firmware** from the **Operations** menu.

Before updating the firmware on any of the selected Quadros, the QCC will prompt to back up its configuration. Press **Yes** to back up the configuration before proceeding with the firmware update (see the section on how [To Back Up the Configuration](#)), or click **No** to start the update immediately. Clicking **Yes to All** at any point will back up the configuration of the remaining Quadro units without asking for confirmation. Clicking **No to All** at any point will cancel the configuration backup of the remaining Quadros.

If a higher firmware version is running on a selected Quadro, the QCC will display a warning about the configuration loss that will result from downgrading the firmware. Click **Yes** to proceed with the firmware update or **No** to cancel.

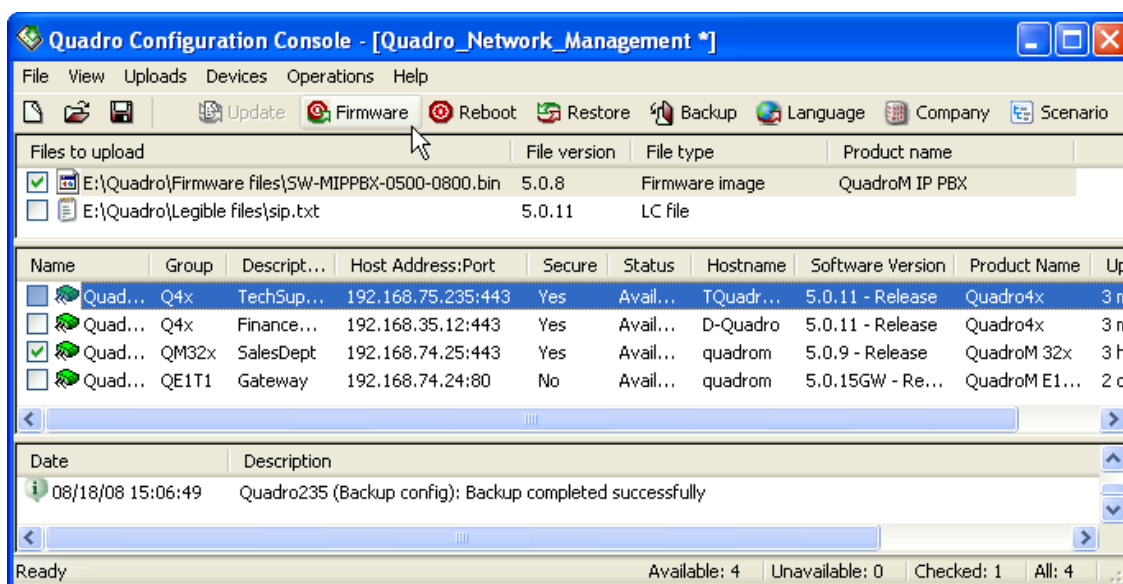


Figure 11 Updating the firmware

To Reboot a Quadro

1. In the **Quadros** pane, select Quadro units to be rebooted. To select a Quadro, select the checkbox assigned to it. Please also see [Check/Uncheck a Group](#).
2. Click on the **Reboot** toolbar icon or choose **Reboot** from the **Operations** menu. Once the Quadro reboots, its status will change to *Available* in the **Status** column.

To Restore the Configuration

1. In the **Quadros** pane, select the Quadro units whose configuration is to be restored.
2. Click on the **Restore** toolbar icon or choose **Restore** from the **Operations** menu. This will open a file chooser window to allow you to select the desired back-up file (see Figure 12). The current folder of the file chooser will be set to the backup folder of the Quadro that is first on the list of the selected Quadros. If this folder does not exist, the QCC will open the backup root folder.
3. Select a backup file and click **Open**.

Please note: Restoring the configuration and voice data requires switching Memory Allocation to the state that was selected when the Quadro configuration and voice data were backed up. For more information, please refer to Manual II: Administrator's Guide for the corresponding Quadro model and release.

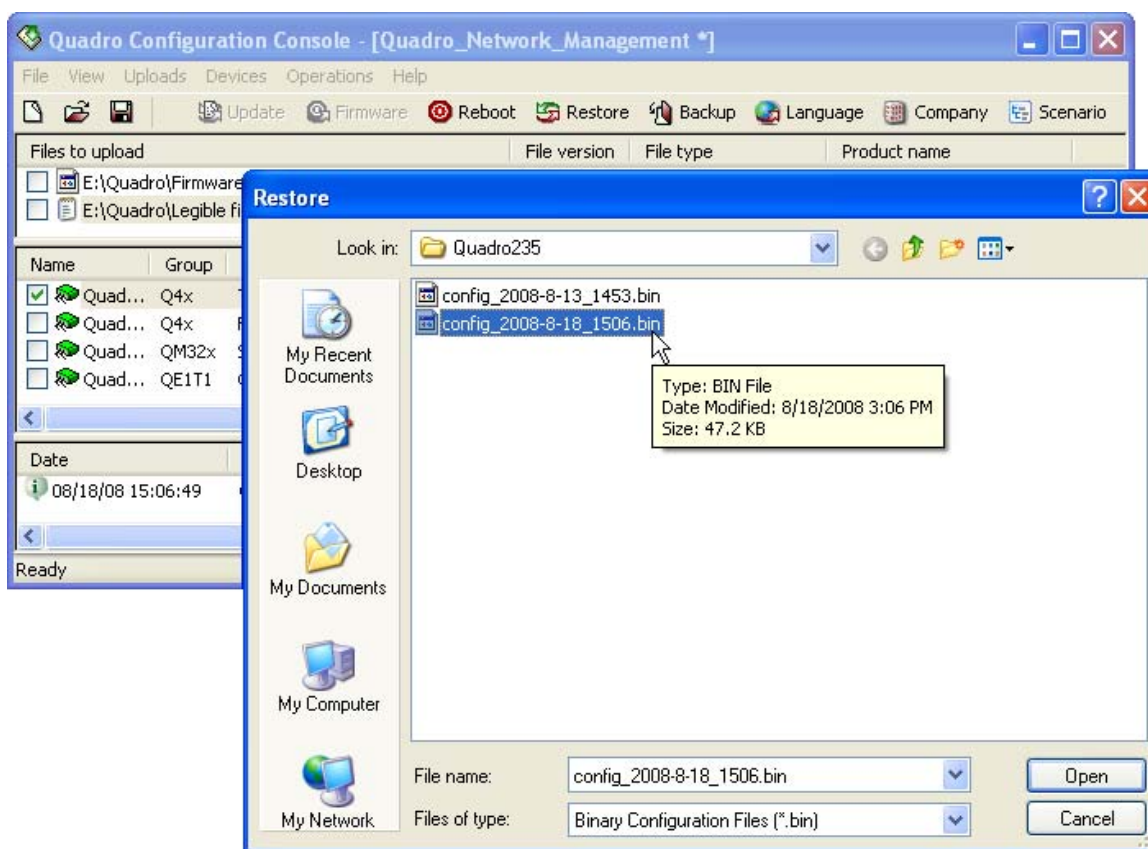



Figure 12 Uploading a back-up configuration file

To Back Up the Configuration

1. In the **Quadros** pane, select the devices whose configuration is to be backed up.
2. Click on the **Backup** toolbar icon or choose **Backup** from the **Operations** menu (see Figure 13).

By default, the QCC stores downloaded backup files in the **Backup** folder created in the QCC's installation directory (the default path is C:\Program Files\Epygi Technologies\QCC). Backup files for each Quadro are stored in a separate subfolder of the **Backup** root folder. Each subfolder is created with the same name as the respective Quadro. To choose another root folder, select Operations→Options and click the  button (see Figure 17). Once chosen, the QCC will further create backup subfolders in the specified location. When removing a Quadro from the Quadros pane (see [Delete a Quadro](#)), the QCC will ask confirmation for also deleting the associated backup subfolder.

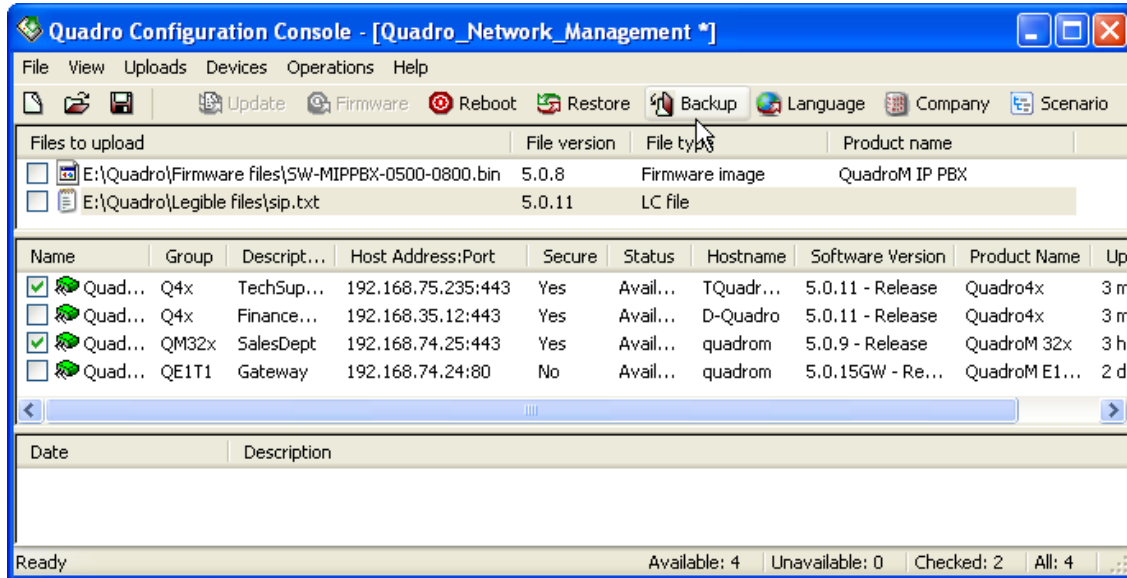


Figure 13 Backing up the configuration

To Upload a Language Pack

1. In the **Quadros** pane, select the Quadro units where the language pack should be uploaded.
2. Click on the **Language** toolbar icon or choose **Language** from the **Operations** menu. This will open a file chooser window.
3. Select the language pack and click **Open** (see Figure 14).

Please note: Uploading a language pack to a Quadro does not automatically activate it. To activate a custom language pack, run the **System Configuration Wizard** and choose the installed language on the **Regional Settings and Preferences** page.

The upload result (successful or failed) and the reason for failure (if any) will be displayed in the **Log** pane.

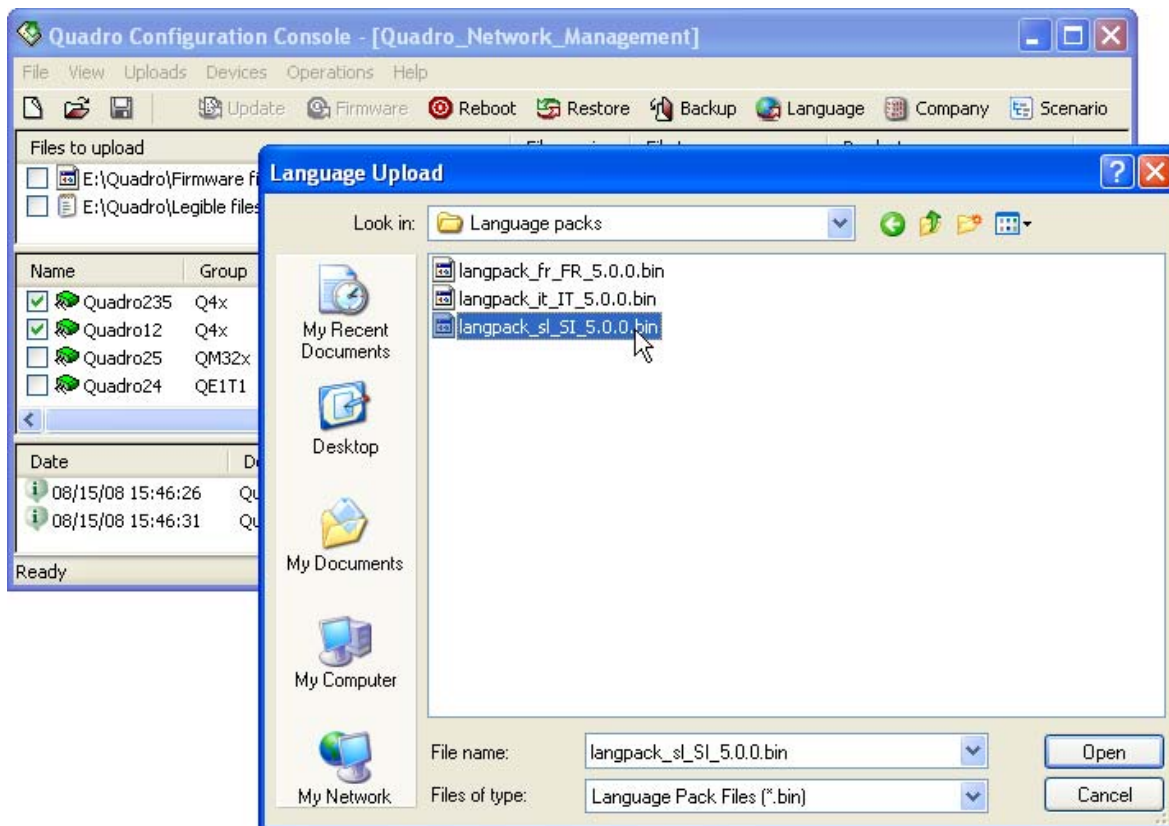





Figure 14: Uploading a language pack

To Upload Company Details

1. In the **Quadros** pane, select the Quadro units where the company details should be uploaded.
2. Click on the **Company** toolbar icon or choose **Company Details** from the **Operations** menu. This will open the **Upload Company Details** window. On this window:
 - Use the  button of the **New Logo** field to choose the static logo file. The static logo appears in the top right corner of all WEB management pages of the Quadro. The logo should be in a gif format and have the size of 120x43 pixels. The logo is created as a link that is pointing to the URL specified in the **Company Website** text field (see below).
 - Use the  button of the **New Running Logo** field to choose the dynamic logo file. The dynamic logo appears in the top right corner WEB management pages when the user saves the configuration. The logo should be in a gif format and have the size of 120x43 pixels.
 - Use the  button of the **New Icon** field to choose the icon logo file that is displayed in the browser's address bar, favorites menu, etc. The icon should be in an ico format and have the size of 16x16 pixels.
 - In the **Copyright Link Text** field, enter the company's name that appears in the copyright notice. The copyright notice is displayed in the left bottom corner of all WEB pages. The Copyright text is created as a link that is pointing to the URL specified in the **Company Website** text field (see below).
 - In the **Logo Link Text** field, enter a text that appears when mouse over the logo.
 - In the **Company Website** text field, enter the URL of the company's website.
3. Click **Upload**.

The upload result (successful or failed) and the reason for failure (if any) will be displayed in the **Log** pane.

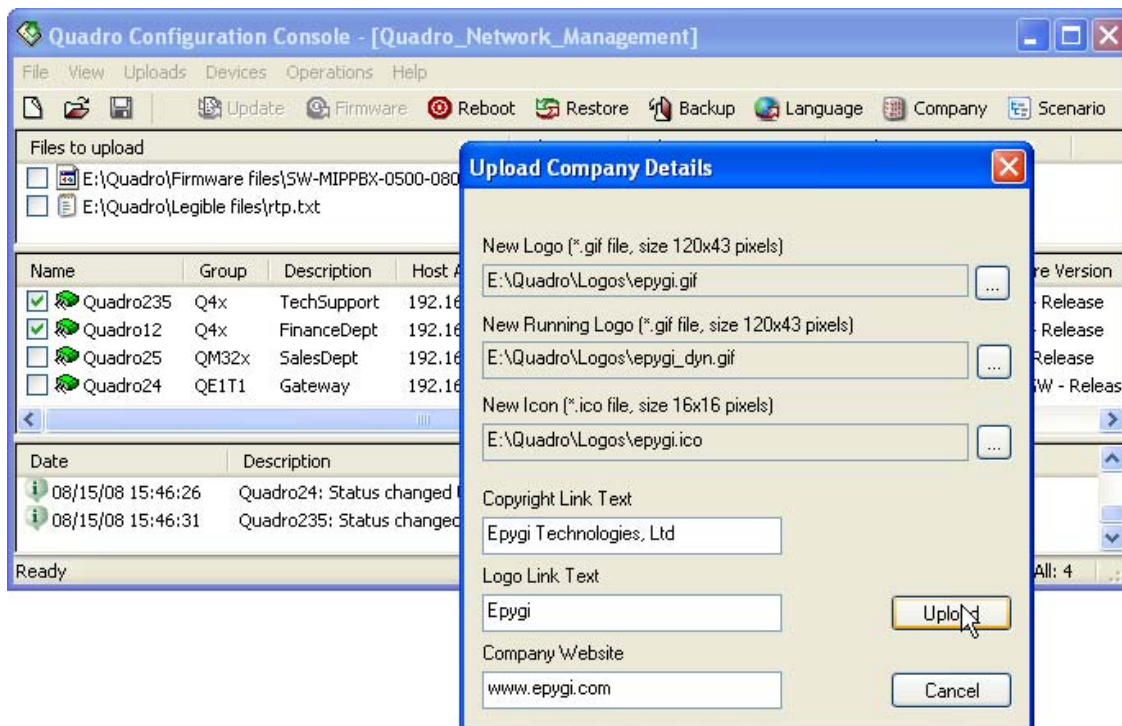


Figure 15: Uploading company details

To Upload Custom Scenario and Voice Messages

1. In the **Quadros** pane, select the Quadro units where the attendant custom scenario and WAV files should be uploaded.

Please note: The files should be archived to a single 'tar.gz' file.
2. Click on the **Scenario** toolbar icon or choose **Custom Scenario** from the **Operations** menu. This will open the **Custom Scenario Voice Messages** window. On this window:
 - Use the button to choose the file with the 'tar.gz' extension that contains the custom scenario and voice messages.
 - In the **Attendant** text field, enter the attendant number that should use the files.
3. Click **OK**.

The upload result (successful or failed) and the reason for failure (if any) will be displayed in the **Log** pane.

Please note: Uploading a custom scenario and voice messages to a Quadro does not automatically change the attendant scenario to custom. To use the uploaded scenario and voice messages, the attendant scenario should be set to custom either before or after uploading.

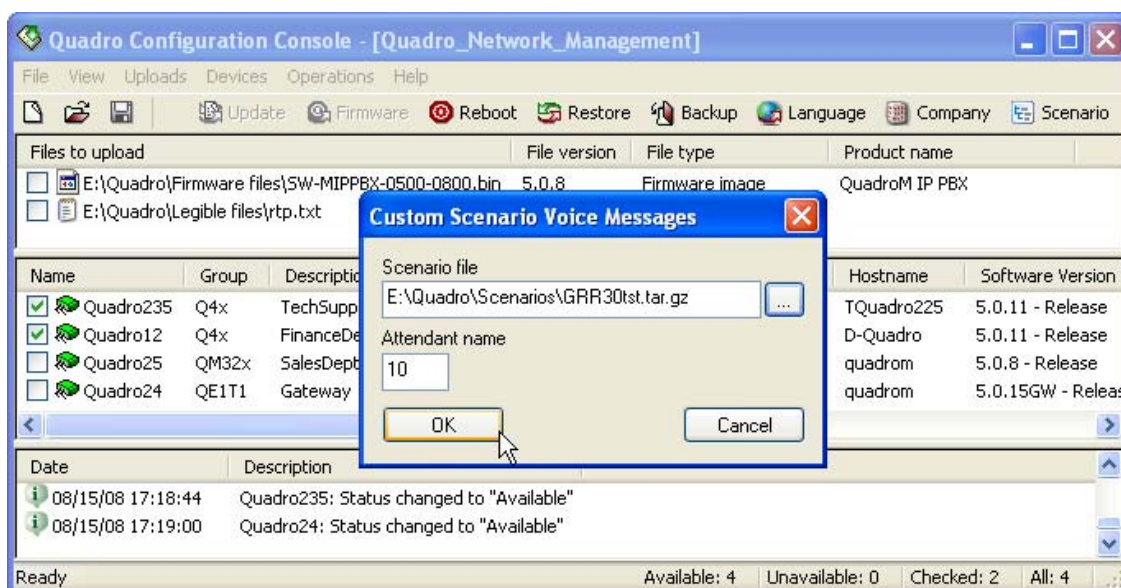


Figure 16 Uploading an attendant custom scenario and voice messages

Saving the QCC's Configuration

Once all Quadros on the network are specified into the QCC (see [Add a Quadro](#)), you can save this list to a file with a ".qcc" extension.

To do this, choose **Save** or **Save as** from the **Files** menu and specify a name for the file.

Note that the list of files will not be saved with a file. It is saved automatically with the QCC's main application and will be displayed automatically whenever you open a saved ".qcc" file or create a new one. See [Remove a file](#) for instructions on how to remove a file from the **Files** pane.

Options

The **Options** dialog box (Operations→Options) allows changing the connection settings, specifying the **Device status check period** parameter, allows to set parameters for sending notification e-mail, and choosing the root backup folder (see Figure 17).

- **HTTP Request timeout** – the time after which the QCC will change the status of a Quadro to *Unavailable* if no response is received from it.

When establishing a secure connection with a Quadro, the QCC may display different errors related to the security certificate of the Quadro's WEB server as described below:

- **Unknown certificate authority** – the certificate authority is not recognized as trusted by the system.
- **Invalid certificate date** – the certificate date has expired or the time and date set on the computer are incorrect.
- **Invalid certificate name** – the IP address does not resolve to the domain name that the certificate belongs to.


To configure the QCC to ignore those warnings, select the appropriate checkboxes on the **Options** dialog box and click the **OK** button.

- **Device status check period** - is the period of time after which the QCC will retry to establish a connection with the Quadro units that have the *Unavailable* status.

To configure **Mail Settings** following fields/drop-down lists should be completed:

- **Host** – requires the IP address or host name of the Simple Mail Transfer Protocol (SMTP) server. This SMTP server is part of your mail server that you normally use to receive and send mails.
- **Port** – requires the SMTP host port number.
- **Select encryption connection type** – allows user to set encryption or not, and there is three options: **None**, which means there is no security, **TSL** (Transport Layer Security) and **SSL** (Secure Sockets Layer).
- **Check Authentication** – must be selected if the specified SMTP server requires authentication. In this case authentication **Username** and **Password** configured on the SMTP server should be defined in the corresponding text fields.
- **Sender Address** – this is source address for the notification emails. The email address defined here should be an existing valid email address registered on the selected SMTP server.
- **Recipient Address** – text field requires an active email address where emails will be delivered.
- **Send test mail** - with this button a test mail can be sent to the defined email address to verify the settings. This button will be enabled if correct values have been submitted and saved on this page.
- **Send mail if device is offline after** – when Quadro becomes unavailable, this is the number of Quadro availability checking attempts before the notification email will be sent.
- **Device status check period** – this is the duration of each above mentioned attempt, when device status is being checked after getting no response from device.

Figure 17 The Options dialog box

The **Backup files folder** text box indicates the location of the root backup folder where Quadro backup files are stored. If not specified, the QCC will create the root folder in the installation directory of the QCC (by default C:\Program Files\Epygi Technologies\QCC). To change the root folder, click the  button and choose the needed folder or create a new one.

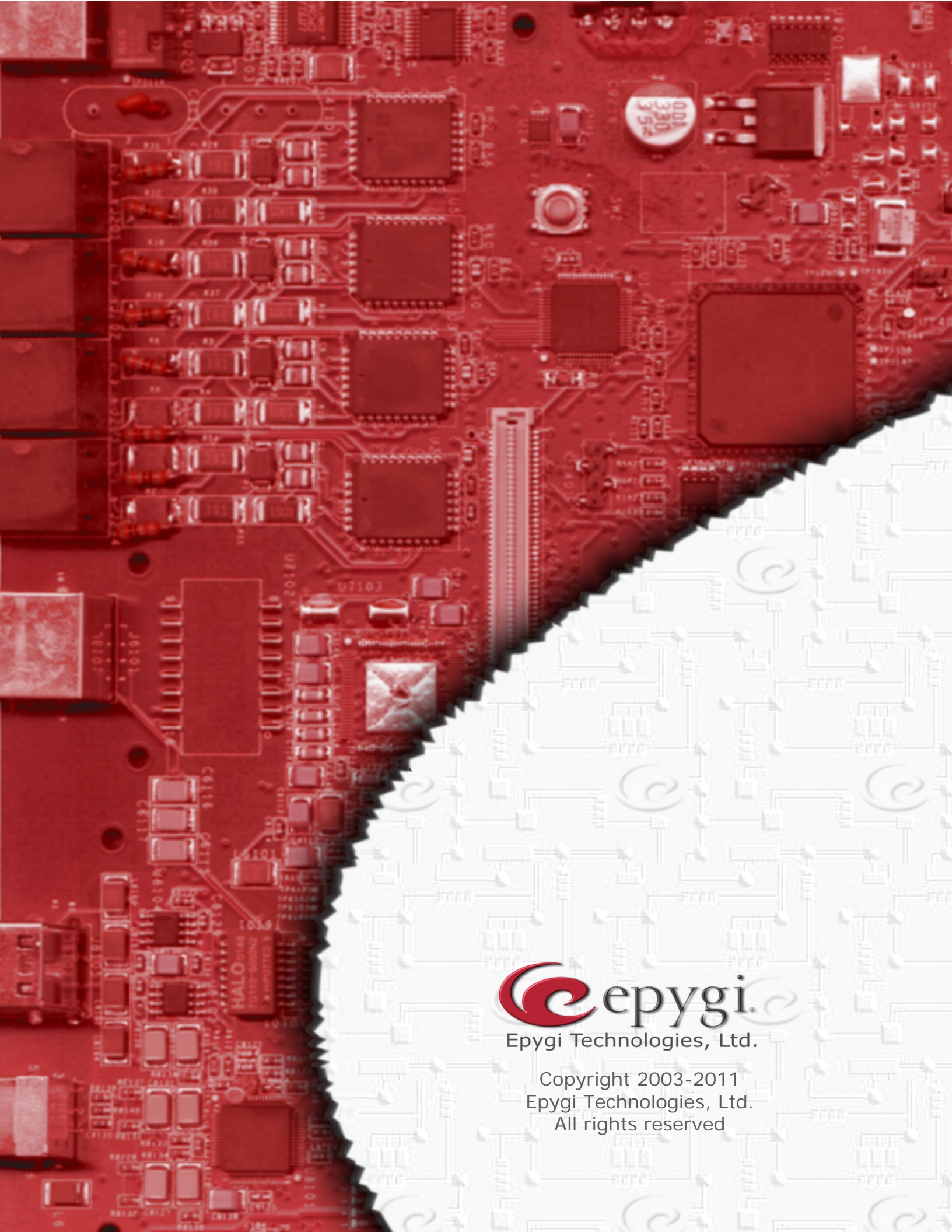
Technical Terms

Legible configuration file - a clear text file containing Quadro configuration parameters. These parameters can be edited and uploaded to the Quadro to make the change to the system. For more information on legible configuration files, please see the *Introduction to Legible Configuration* document available in the **Downloads** section of Epygi's Support Center.

Language pack - a translated set of voice messages, online help and web management GUI that can be uploaded to a Quadro to support a specific language. For more information on language packs, please see the *How to Create Quadro Language Packs* document available in the **Downloads** section of Epygi's Support Center.

THIS DOCUMENT IS PROVIDED TO YOU FOR INFORMATIONAL PURPOSES ONLY. The information furnished in this document, believed by Epygi Technologies to be accurate as of the date of publication, is subject to change without notice. Epygi Technologies assumes no responsibility for any errors or omissions in this document and shall have no obligation to you as a result of having made this document available to you or based upon the information it contains.

Epygi is a registered trademark of Epygi Technologies, Ltd. All other products and services are the registered trademarks of their respective holders



Epygi Technologies, Ltd.

Copyright 2003-2011
Epygi Technologies, Ltd.
All rights reserved